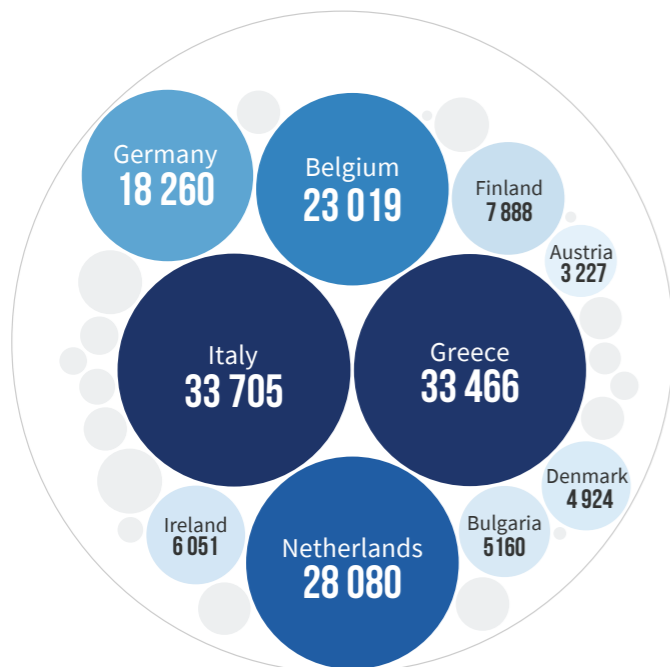
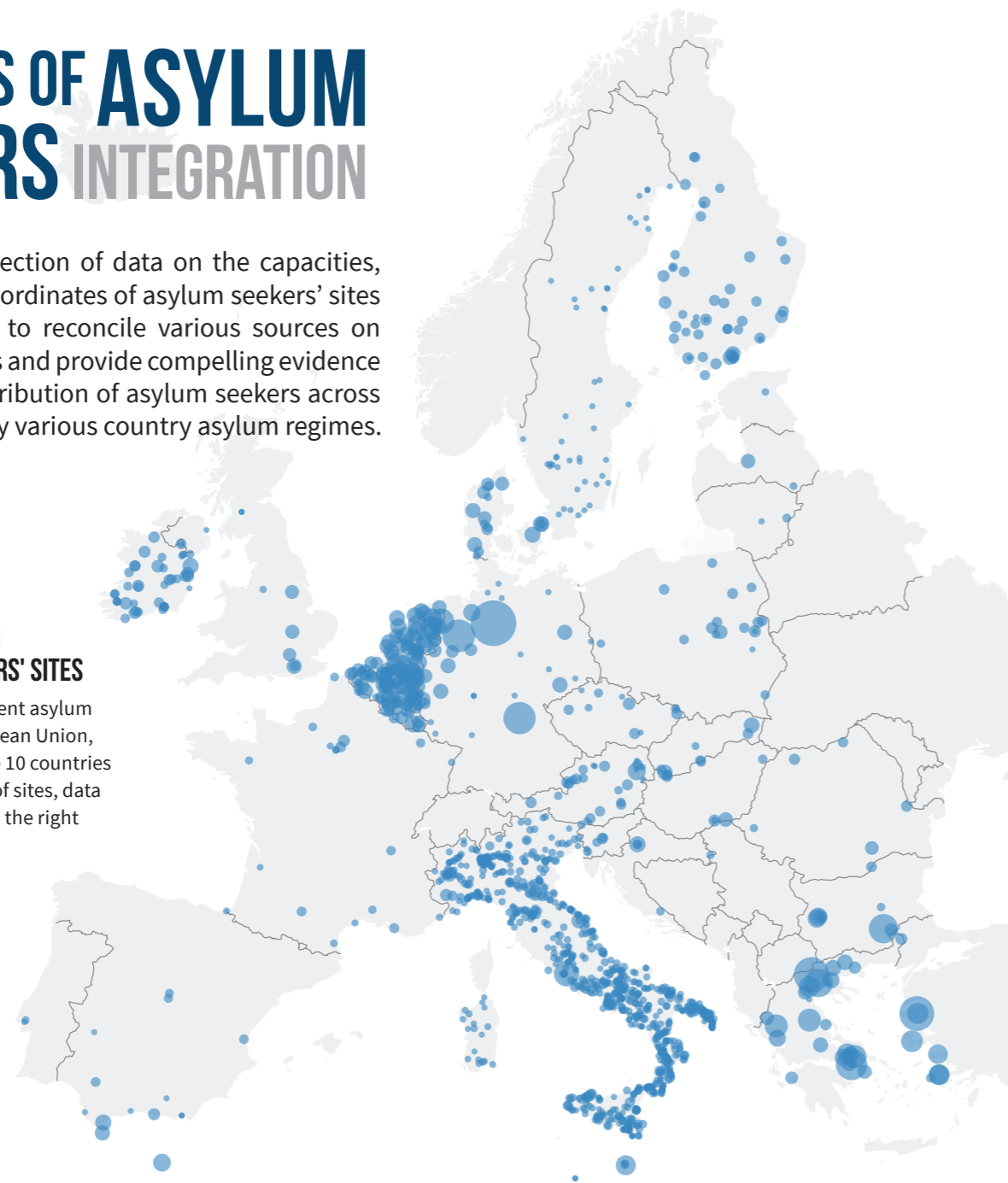


HOTSPOTS OF ASYLUM SEEKERS INTEGRATION

The aim of the collection of data on the capacities, facility types and coordinates of asylum seekers' sites across Europe was to reconcile various sources on asylum seekers sites and provide compelling evidence on the unequal distribution of asylum seekers across Europe generated by various country asylum regimes.

EUROPEAN UNION 2018: MAP OF ASYLUM SEEKERS' SITES

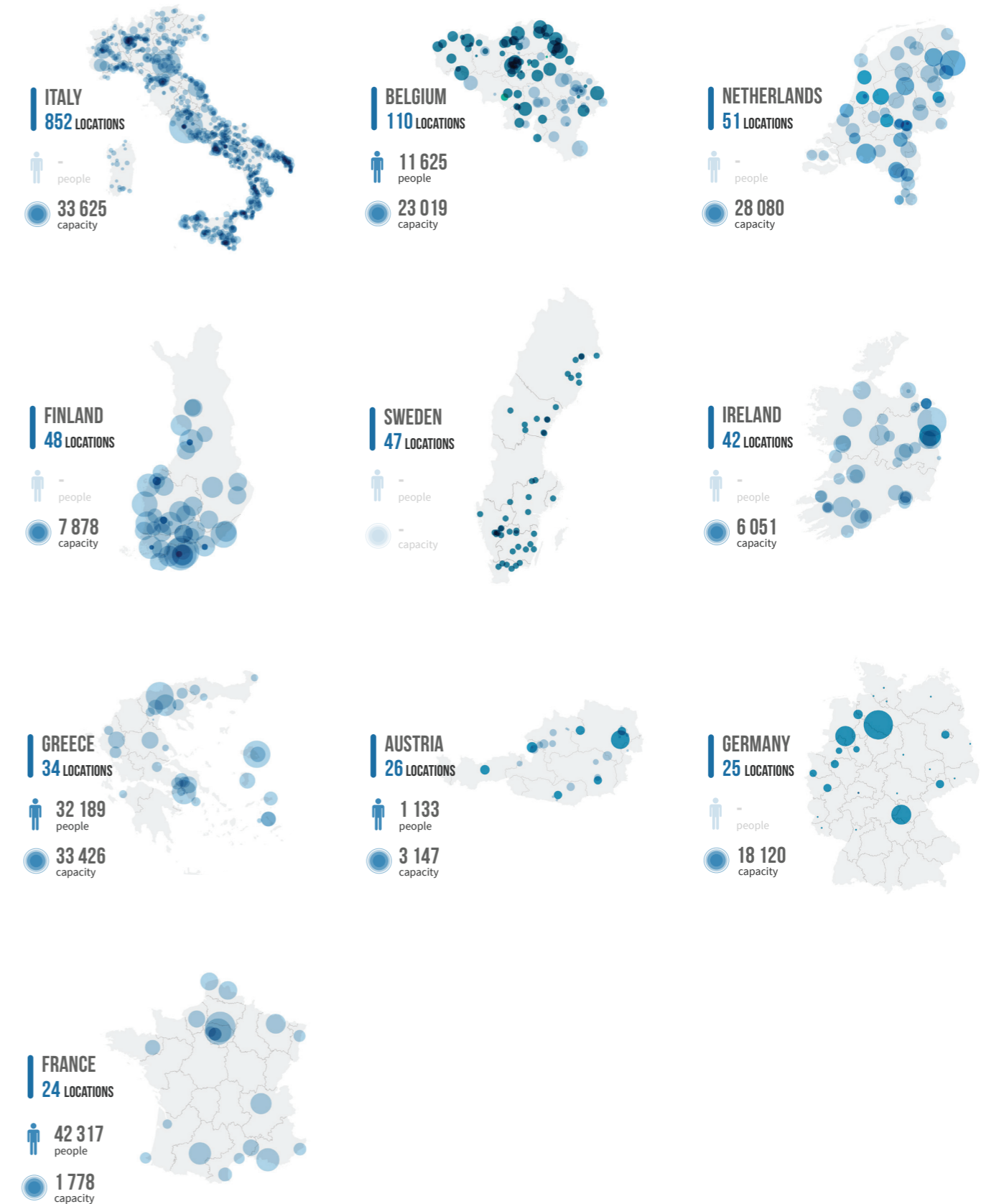
This map shows the different asylum seekers' sites in the European Union, and their capacity. For the 10 countries with the highest number of sites, data are mapped separately on the right hand side as well.



COUNTRIES WITH THE HIGHEST LONG-TERM CAPACITY

This chart represents the 10 countries with the highest long-term (>1 year) capacity for asylum seekers. Greece and the Netherlands have the highest number, but despite this, France has the highest number of incoming asylum seekers: 42 317 persons in 2018.

COUNTRIES WITH THE HIGHEST NUMBER OF SITES



RESEARCHERS INVOLVED

Paula Puskarova (EUBA)
Michaela Čiefová (EUBA)



This project has received funding from the European Commission Horizon 2020 Research and Innovation Programme under grant agreement N°822806.